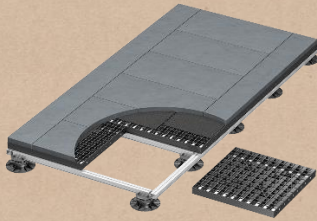


Terrace Floor System

Elevated Outdoor Terrace System

What is BERA[®] Terrace Floor[™] System?



Our Innovative and Recyclable Terrace Floor System has been designed to become the ‘double’ elevated floor, to allow for laying any size, shape or pattern of (ceramic) tiles or pavers.

Made of 100% recycled polycarbonate originating from the automotive industry, 100% recyclable and above all manufactured in our ‘green’ sustainable Czech plant we provide another unique

solution in landscaping, this time for the growing demand for creative terrace designs with stunning ceramic tiles.

Environmental and Engineering Excellence

BERA Terrace Floor[™] is manufactured in the Czech Republic under stringent Quality and Environmental Control. The full circular process includes recycled raw material collection, cleaning and processing into a fully recyclable strong product.

The well-developed infrastructure to minimize our delivery carbon footprint underlines our corporate vision in providing environmentally sustainable solutions.

BERA Terrace Floor[™] has 50 mm deep, open grid structure to ensure the highest vertical strength and rigidity. Integrated lateral interlocking systems and fixations pads made of polyamide provide enhanced stability and lateral strength. All material is 100% recyclable after end of life.

Applications

- ✔ Terraces (garden, roof and restaurant).
- ✔ Balconies and access gallery.
- ✔ Pool deck.
- ✔ Pedestrian area’s in general

Features and benefits

- ✔ Free surface for ceramic and concrete tiles or other paving products even artificial grass.
- ✔ Extremely rigid floor for safety and strength rated at 750 kg point load.
- ✔ Large 60 x 60 cm grids for fast installation directly on pedestals, timber or aluminum joints.
- ✔ Lateral connectors for additional strength.
- ✔ Fixation pads made of polyamide for pressure distribution.
- ✔ Durability of the entire system, no rotting
- ✔ Rainwater can discharge through the available existing drainage system.
- ✔ All technical wiring, tubing etc. can be hidden under the floor.
- ✔ European Union manufacturing following directives of REACH, ISO9001 and 14001.

Technical Specifications

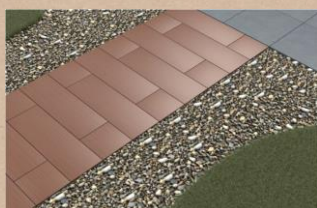
General	
Material grids	Recycled Polycarbonate
Manufacturing technique	High precision injection moulding
Manufacturing standards	REACH, ISO9001, ISO14001
UV and frost resistance	Included
Color	Black
Interlocking	Included

Physical Data	
Grid size	600 x 600 x 50 mm
Dimensions tolerance	+/- 2%
Surface per grid	0.36 m ²
Quantity per m ²	2.78
Strength, point load	Up to 750 kg

*All data is subject to change without prior notice by the manufacturer.

BERA Terrace Floor System Components

Product ID	Description	Note
3501000	Grid 60 x 60 x 5 cm	Packing 88 pieces/pallet
3501001	Fixation Screw-Pad	Box, 100 pieces
3501002	Spacer 3mm - (h)15 mm black	Box, 50 pieces
3501003	Spacer 3mm - (h)15 mm transparent	Box, 50 pieces
3501004	Edging profile (T), aluminum - 2 m length	Box, 20 pieces
3501005	Bracket, additional grid holder	Bag,10 pieces
3501006	Pad Roll, sound absorbing (w) 40 cm - 10 m	Roll
3501007	Pad Tape, self-adhesive (w) 87 mm - 30 m	Roll
3501008	Fixation Tape, double side self-adhesive 40 mm - 2.5 m	Roll
3501009	Screw 5 x 50 mm, for fixation grids to timber	
3501010	Screw 5.5 x 60 mm, self-drill for fixation to aluminum or plastic	
3501011	Screw 5.5 x 19 mm, self-drill for fixation edge to grids	



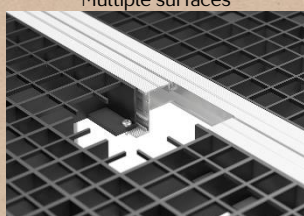
BERA Terrace Floor™
Multiple surfaces



BERA Terrace Floor™
Multiple pattern and Surfaces



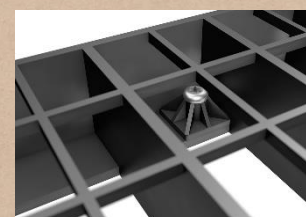
BERA Terrace Floor™
Versatile terrace creativity



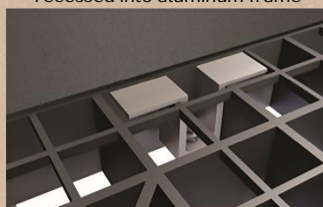
Fixation of grid (3501000)
recessed into aluminum frame



Fixation of grid (3501000) direct to pedestal



Fixation Screw-Pad (3501001)



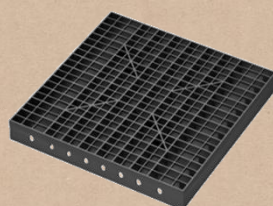
Bracket (3501005) holding grid (3501000)



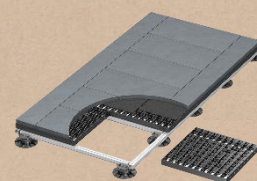
Spacer 3mm (3501002 or 3501003)



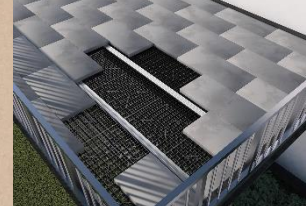
Detail of lateral locks between grids



Grid 60 x 60 cm (3501000)



BERA Terrace Floor™
Multiple pattern tiles 30 x 120 cm



BERA Terrace Floor™
Elevated terrace / balcony